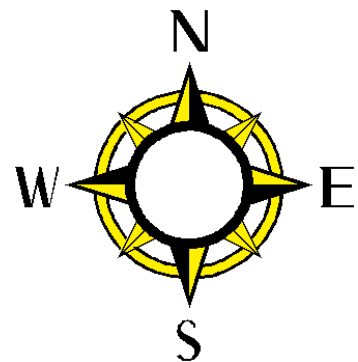
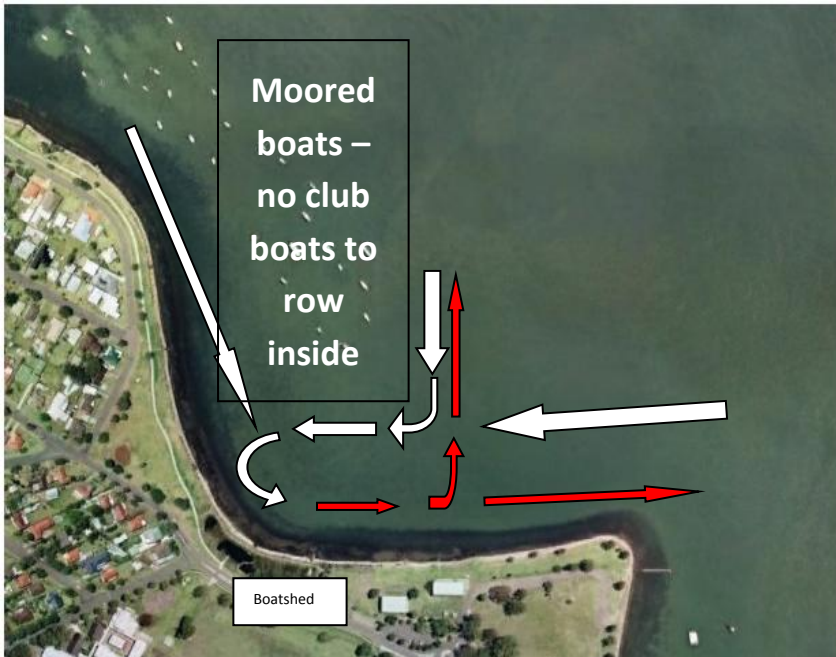


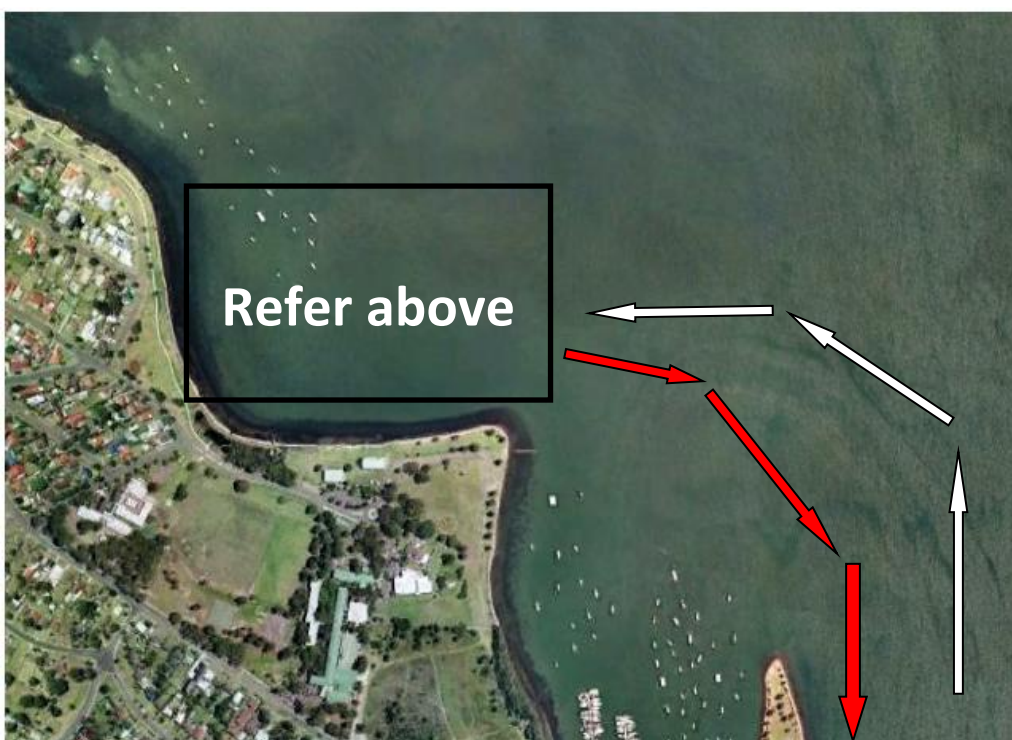
“RULES OF THE ROAD” – FORESHORE, LAKE, & COCKLE CREEK

Leaving and returning to LMRC Boatshed & Foreshore area:

- Boats leaving foreshore have right of way but must move to the east & clear the foreshore area as soon as possible (“fix up” away from the shoreline)
- All boats to return to foreshore **FROM THE WEST** – do not ‘cut-off’ boats leaving the foreshore.
- ‘Learn to Row’ groups – coaches must ensure compliance to “Rules of the Road”
- Crews using LMRC boats **MUST** ensure sufficient depth under the keel at **ALL** times – particularly in shallows near the foreshore drain between LMRC and TASC.



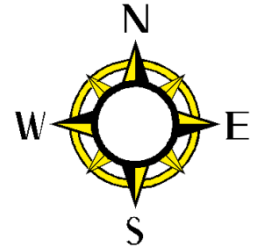
Lake (southern course)



Crews travelling South are to stay to the west of the yacht racing mark at southern end of Marmong Point.

Returning crews to stay to the EAST of yacht racing mark at southern end of Marmong Point, and stay North when turning into Cockle Bay.

COCKLE CREEK RULES & HAZARDS



ROW TOWARDS THE CENTRE ONCE PAST THE FORK DUE TO FALLEN TREES AND SUBMERGED LOGS ALONG THE BANK.

CAUTION: SHALLOW CLOSE TO BANKS

CAUTION: RAILWAY BRIDGE. SUBMERGED ROCKS EXIST CLOSE TO AND TO THE EAST OF THE CENTRE PYLON.

ALL CREWS ROW BOW-SIDE TO CREEK BANK - PASS OTHERS ON YOUR STROKE SIDE.

ALWAYS PASS ON THE WESTERN SIDE OF THE BRIDGE AND OLD PYLONS, STICKING TO THE CENTRE, DO NOT PASS OTHER CRAFT UNDER THE BRIDGE.

OVERTAKING CREWS MUST ENSURE SAFE TO DO SO, BOATS BEING OVERTAKEN MUST GIVE WAY.

RETURNING CREWS HAVE RIGHT OF WAY UNDER BRIDGE / BETWEEN PYLONS.

TINNIES MUST ABIDE BY NAVIGATIONAL MARKERS - STAY TO THE WEST SIDE OF THE GREEN MARKERS & BUOYS.

NAVIGATION HAZARDS REMOVED HOWEVER RETURNING CREWS ARE TO PASS CLOSE TO THE WEST SIDE OF RED BUOY.

CREWS HEADING UP THE CREEK TO STAY CLOSE TO THE EAST SIDE OF RED BUOY.

CAUTION: SHALLOW CLOSE TO EAST BANK

ONLY EXPERIENCED CREWS TO USE WEST ARM OF CREEK.

CAUTION: ROAD BRIDGE. PASS THROUGH AT A SLOW PACE CONSTANTLY CHECKING PASSAGE OF TRAVEL.

CREWS HEADING UP THE CREEK ARE TO STAY WITHIN THE BRIDGE NAVIGATION MARKS.

RETURNING CREWS HAVE RIGHT OF WAY UNDER BRIDGE

NO DEEP FINNED CLUB BOATS.

BOAT RAMP AND JETTY: KEEP AN EYE OUT FOR LAUNCHING BOATS. ROCK SHELF ON EASTERN SIDE OF CREEK BANK AT ENTRY

RETURNING CREWS MAY PASS BETWEEN WESTERN SIDE PYLONS - WITH CARE.

VERY SHALLOW WATER, DEEP FINNED BOATS SHOULD NOT PASS THROUGH HERE

SHALLOW WATER AT ENTRY TO CREEK - ON LOW TIDE TINNIES MUST ABIDE BY NAVIGATIONAL MARKERS